

Encoder Cable. EC-...B-BF



- Encoder cable for absolute linear or angular encoders with digital BiSS C plus 1 Vpp analog signals output.
- Direct connection to Beckhoff drive systems.
- Twisted pairs for differential signals.
- Dual shield on four wires.
- Available in 1, 3, 6 & 9 meter lengths.
- Available with or without armour.
- Supply voltage sense link.

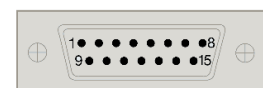
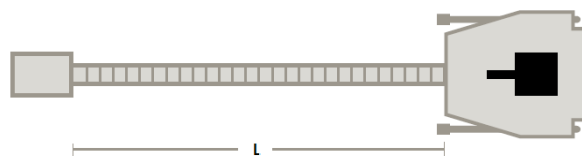
Pin Out

Pin Input	Colour	Signal	Pin Output
	Brown	+5 V	4
	Red-Blue (Light Green)	+5 V sense	12
	Black	CLOCK	8
	Violet	/CLOCK	15
	White + Internal Shield	0 V	2
	Grey-Pink (Orange)	0 V sense	10
	Blue	B	1
	Red	/B	9
	Grey	DATA	5
	Green	A	3
	Yellow	/A	11
	Pink	/DATA	13
	External Shield	Ground	Housing

Pin Layout

Cable Diagram

Pin Layout



Front view

L = 1, 3, 6, 9 meters

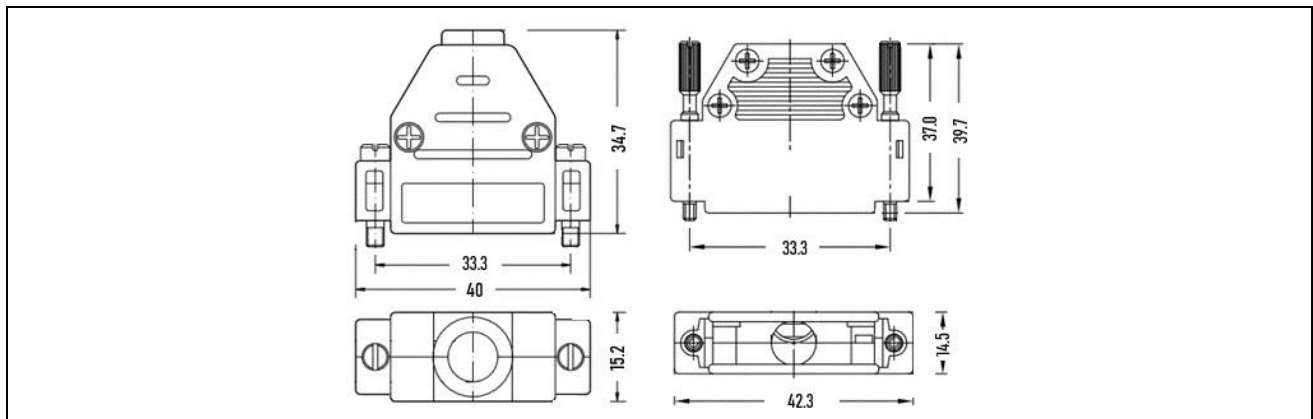
Lead-in Connector

Cable Specification

Terminating Connector

Construction	4 x 0.09 mm ² + 4 x 0.09 mm ² + 4 x 0.14 mm ²
Material	Polyurethane
Ø without armour	6 mm
Bend radius dynamic	≥ 60 mm
Bend radius static	≥ 24 mm
Ø with armour	10 mm
Bend radius dynamic	≥ 60 mm
Bend radius static	≥ 35 mm
Shield	Single plus dual for 4 wires
Terminating connector	D-Sub 15 pole male

Housing dimensions slightly differ for manufacturers



Order Information

EC-(x)B-BF Where (x) = 1, 3, 6 or 9 meters with armour; indicate "-N" for no armour.

Example

Order Code	Description
EC-3B-BF	Encoder cable of 3 meters, cable type "B" specifications as above and terminating connector D-Sub 15 pole male, with armour.
EC-6B-BF-N	Encoder cable of 6 meters, cable type "B" specifications as above and terminating connector D-Sub 15 pole male, without armour.