

Encoder Cable. EC-...P-S2



- Encoder cable for incremental linear or angular encoders with TTL differential signal output.
- Direct connection to Siemens SMC30 module.
- Twisted pairs for differential signals.
- Available in 1, 3, 4, 5, 6, 7, 9 & 12 meter lengths with armour.
- Available with or without armour.

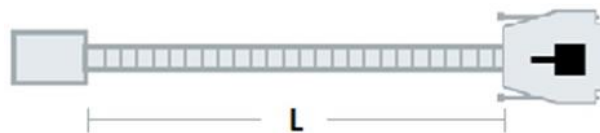
Pin Out

Pin Input	Colour	Signal	Pin Output
	Green	A	15
	Yellow	/A	14
	Blue	B	13
	Red	/B	12
	Grey	Io	10
	Pink	/Io	11
	Brown	+5 V	4
	Linked to 4	+5 V	5
	White	0 V	7
	Shield	Ground	Housing

Pin Layout

Cable Diagram

Pin Layout



L = 1, 3, 4, 5, 6, 7, 9, 12 meters, with armour



Front view

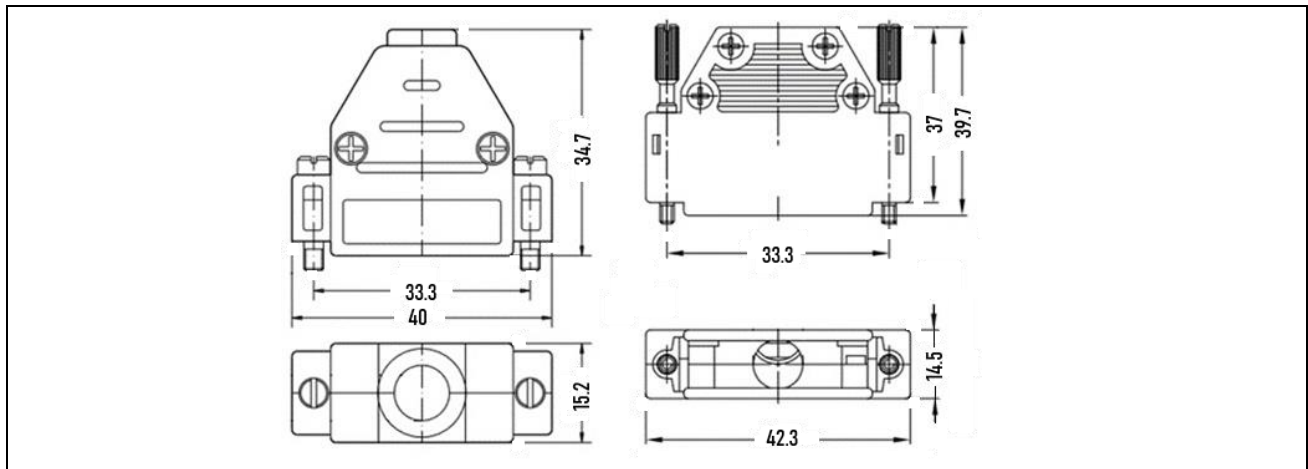
Lead-in Connector

Cable Specification

Terminating Connector

Construction	4 x 2 x 0.14 mm ²
Material	Polyurethane
Ø without armour	6 mm
Bend radius dynamic	≥ 60 mm
Bend radius static	≥ 24 mm
Ø with armour	10 mm
Bend radius dynamic	≥ 60 mm
Bend radius static	≥ 35 mm
Shield	Single
Terminating connector	D-Sub 15 pole male

Housing dimensions slightly differ for manufacturers



Order Information

EC-(x)P-S2 Where (x) = 1, 3, 4, 5, 6, 7, 9 or 12 meters lengths with armour. Indicate "-N" for no armour.

Example

Order Code	Description
EC-3P-S2	Encoder cable of 3 meters, cable type "P" specifications as above and terminating connector D-Sub 15 pole male, with armour.