

Extension Cable. XC-C8-...F-AI



- Extension cable for absolute linear or angular encoders with digital SSI plus 1 Vpp analog signals output or with fully digital BiSS C protocol.
- Extension cable XC-C8-F-AI connects:
 - encoder cable EC-...B-C9.
 - angular encoder H2A ... D87 ... C9.
 - absolute exposed L2A ... C9D.
 to Bosch-Rexroth CNC systems.
- Dual shield of the analog signals.
- Twisted pairs for differential signals.
- Available in 5, 10, 15, 20 & 25 meter lengths.
- Low power attenuation and supply voltage sense link.

Pin Out

Pin Input	Colour	Signal	Pin Output
1	Blue	+5 V sense	12
4	White	0 V sense	4
7	Brown-Green	+5 V	12
8	Purple	CLOCK	13
9	Yellow	/CLOCK	14
10	White-Green	0 V	4
12	Blue-Black	B	5
13	Red-Black	/B	6
14	Grey	DATA	7
15	Green-Black	A	2
16	Yellow-Black	/A	3
17	Pink	/DATA	8
11	Internal Shield	Ground	1
Housing	External Shield	Ground	Housing

Pin Layout



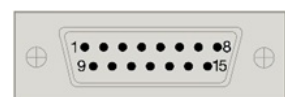
Front view

Cable Diagram



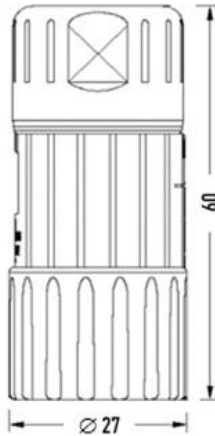
L = 5, 10, 15, 20, 25 meters

Pin Layout



Front view

Lead-in Connector

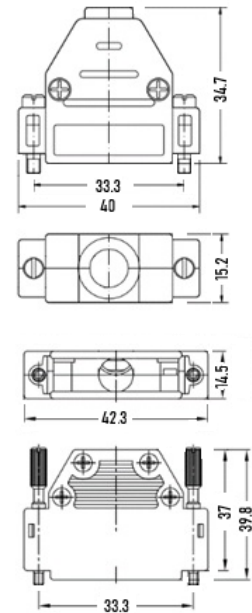


Cable Specification

Construction	4 x 2 x 0.14 mm ² + 4 x 0.5 mm ² + 4 x 0.14 mm ²
Material	Polyurethane
Ø	8 mm
Bend radius dynamic	≥ 80 mm
Bend radius static	≥ 50 mm
Shield	Single plus dual for 4 wires
Lead-in connector (encoder side)	M23 17-pin female, external female, contact arrangement direction P
Terminating connector	D-Sub 15 pole male

Terminating Connector

Housing dimensions slightly differ for manufacturers



Order Information

XC-C8-(x)F-AI Where (x) = 5, 10, 15, 20 or 25 meters.

Example

Order Code	Description
XC-C8-10F-AI	Extension cable of 10 meters, specifications as above, lead-in connector M23 17-pin female, external female, contact arrangement direction P. Terminating connector D-Sub 15 pole male.