

## Extension Cable. XC-C8-...F-BF



- Extension cable for absolute linear or angular encoders with digital BiSS-C plus 1 Vpp analog signals output.
- Extension cable XC-C8-F-BF connects:
  - encoder cable EC-...B-C9.
  - angular encoder H2AB ... D87 ... C9.
  - absolute exposed L2ABC ... C9D.
 to Beckhoff drive systems.
- Dual shield of the analog signals.
- Twisted pairs for differential signals.
- Available in 5, 10, 15, 20 & 25 meter lengths.
- Low power attenuation and supply voltage sense link.

### Pin Out

| Pin Input | Colour          | Signal     | Pin Output |
|-----------|-----------------|------------|------------|
| 1         | Blue            | +5 V sense | 12         |
| 4         | White           | 0 V sense  | 10         |
| 7         | Brown-Green     | +5 V       | 4          |
| 8         | Purple          | CLOCK      | 8          |
| 9         | Yellow          | /CLOCK     | 15         |
| 10        | White-Green     | 0 V        | 2          |
| 12        | Blue-Black      | B          | 1          |
| 13        | Red-Black       | /B         | 9          |
| 14        | Grey            | DATA       | 5          |
| 15        | Green-Black     | A          | 3          |
| 16        | Yellow-Black    | /A         | 11         |
| 17        | Pink            | /DATA      | 13         |
| 11        | Internal Shield | Ground     | 2          |
| Housing   | External Shield | Ground     | Housing    |

### Pin Layout



Front view

### Cable Diagram



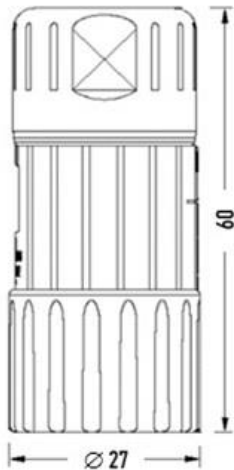
L = 5, 10, 15, 20, 25 meters

### Pin Layout



Front view

## Lead-in Connector

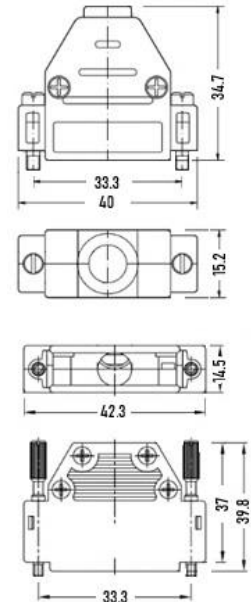


## Cable Specification

|   |   |
|---|---|
| <b>Construction</b>                     | 4 x 2 x 0.14 mm <sup>2</sup><br>+ 4 x 0.5 mm <sup>2</sup><br>+ 4 x 0.14 mm <sup>2</sup> |
| <b>Material</b>                         | Polyurethane  |
| <b>Ø</b>                                | 8 mm  |
| <b>Bend radius dynamic</b>              | ≥ 80 mm   |
| <b>Bend radius static</b>               | ≥ 50 mm   |
| <b>Shield</b>                           | Single plus dual for 4 wires  |
| <b>Lead-in connector (encoder side)</b> | M23 17-pin female, external female, contact arrangement direction P                     |
| <b>Terminating connector</b>            | D-Sub 15 pole male  |

## Terminating Connector

Housing dimensions slightly differ for manufacturers



## Order Information

XC-C8-(x)F-BF      Where (x) = 5, 10, 15, 20 or 25 meters.

## Example

| Order Code   | Description   |
|--------------|---|
| XC-C8-10F-BF | Extension cable of 10 meters, specifications as above, lead-in connector M23 17-pin female, external female, contact arrangement direction P. Terminating connector D-Sub 15 pole male. |