

# Windows Embedded Language Setup.

(REF: 1709)

Introduction. ....2

Language change.....2

## 1. INTRODUCTION.

This manual describes the procedure to change the Windows language for CNCs carrying the Windows Embedded Standard 7 Operating System. All steps described in this manual must be followed while the CNC is in Administrator mode; otherwise, all the modifications made will be lost when turning the CNC off.

The minimum free space required to allow the Windows Embedded language change operation is 750 MByte.

The CNC can only have one language installed. By default, it comes in English, but it may later be changed to another one by downloading the corresponding language file and the WinEmbLangApp.exe from our corporate website:

**[www.fagorautomation.com/en/downloads](http://www.fagorautomation.com/en/downloads).**

The available languages are:

|         |         |                    |        |            |
|---------|---------|--------------------|--------|------------|
| Czech   | Spanish | Dutch              | Finish | French     |
| German  | Russian | Italian            | Polish | Portuguese |
| Turkish | Korean  | Simplified Chinese |        |            |

## 2. LANGUAGE CHANGE

First, download one or more language pack files, **lp.cab**, and **WinEmbLangAppInstaller.exe** application from the website. Those files must be accessible from the CNC in order to be able to do the setup. For example, it may be copied into the **C:\Public\Lang** folder of the CNC.

**C:\Public\Lang\**

**lp\_cs.cab**

**lp\_de.cab**

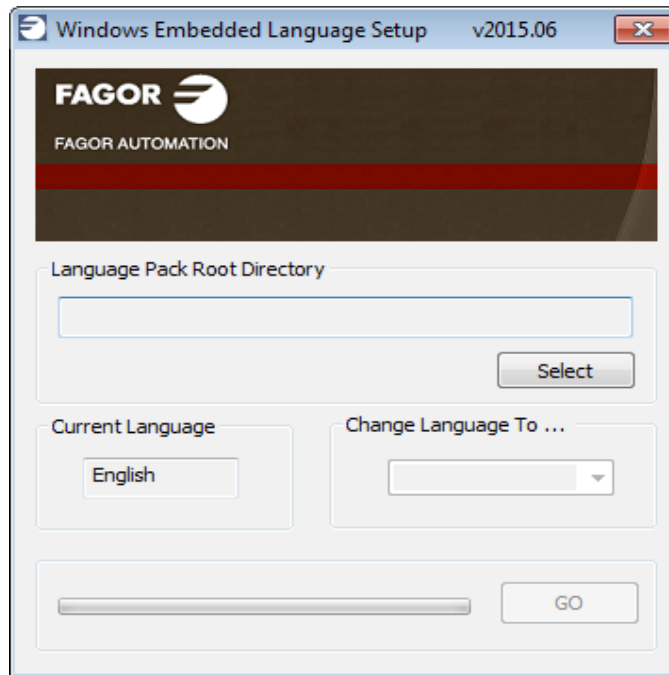
**lp\_en.cab**

**lp\_es.cab**

...

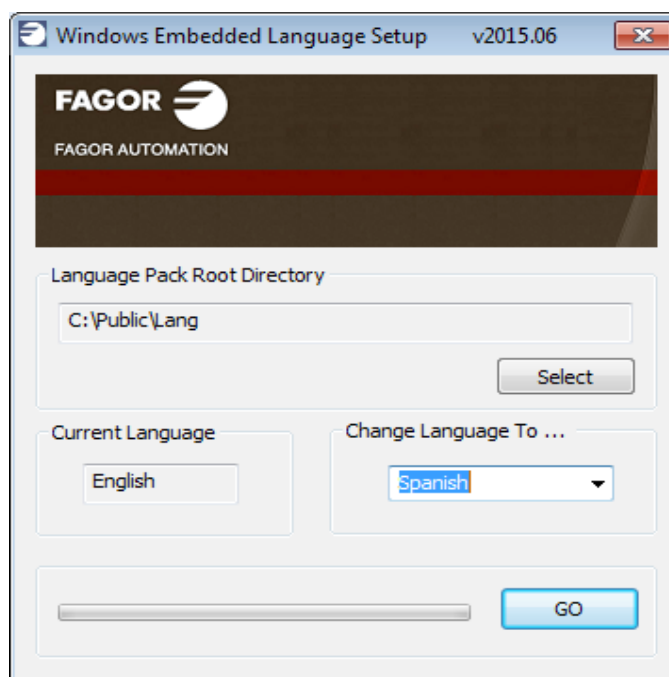
### Windows Embedded Language Setup.

Execute WinEmbLangAppInstaller.exe. WinEmbLangApp.exe application will be installed in current directory. And then, launch it.



Press the **Select** button and browse to select the root directory containing **lp.cab** files just copied to the CNC: **C:\Public\Lang**. **WinEmbLangApp.exe** will scan the selected root directory looking for available languages.

From the list of available languages, select the desired one. Then, press the **GO** button. Some warning messages will appear.



Once the process is completed, the CNC will restart automatically. On the next start-up, Windows Embedded will start up in the selected language.



**Fagor Automation S. Coop.**

Bº San Andrés, 19 - Apdo. 144  
E-20500 Arrasate-Mondragón, Spain

Tel: +34 943 719 200

+34 943 039 800

Fax: +34 943 791 712

E-mail: [info@fagorautomation.es](mailto:info@fagorautomation.es)

[www.fagorautomation.com](http://www.fagorautomation.com)